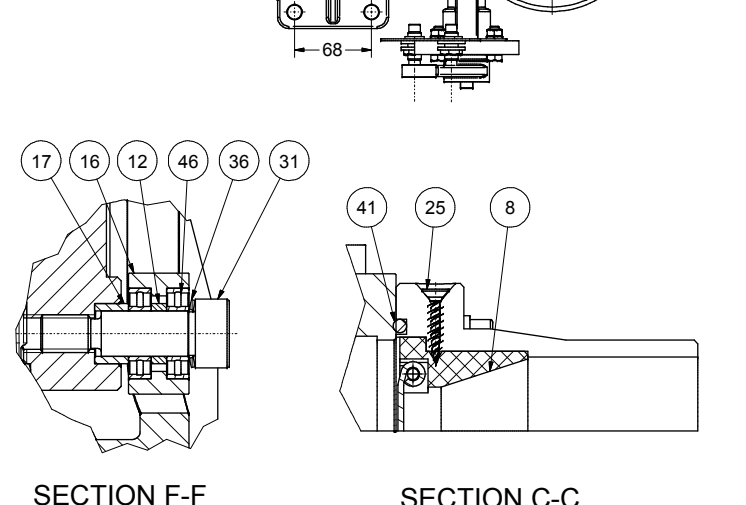
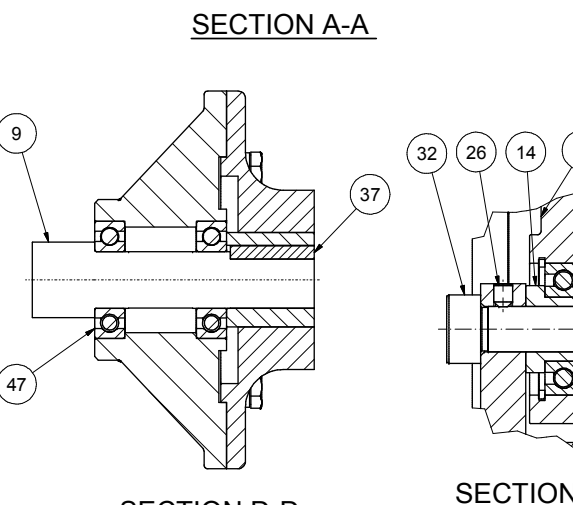
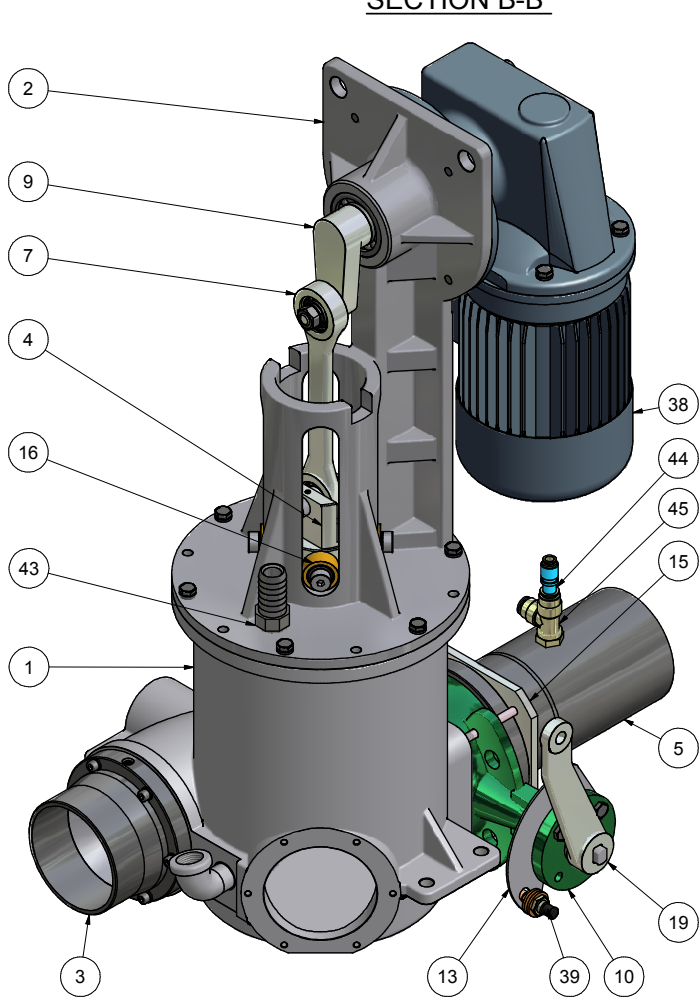
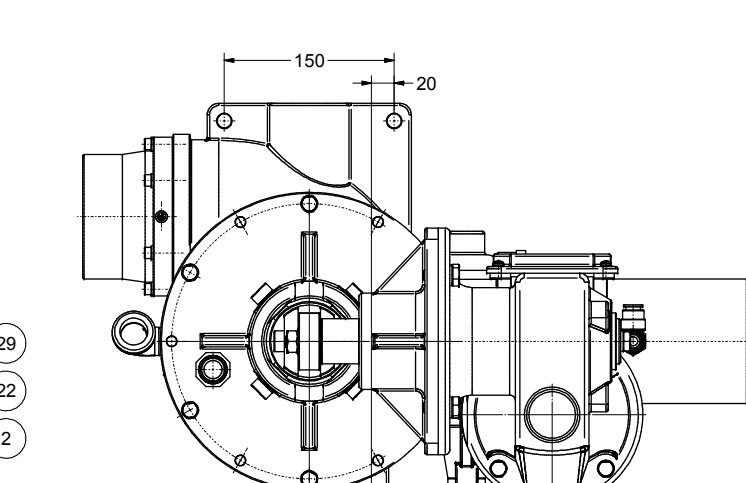
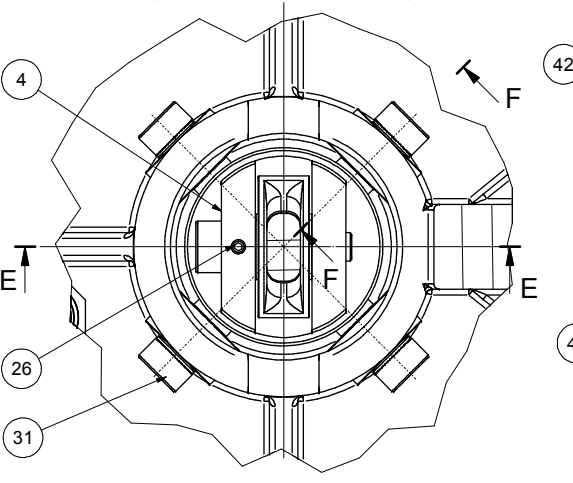
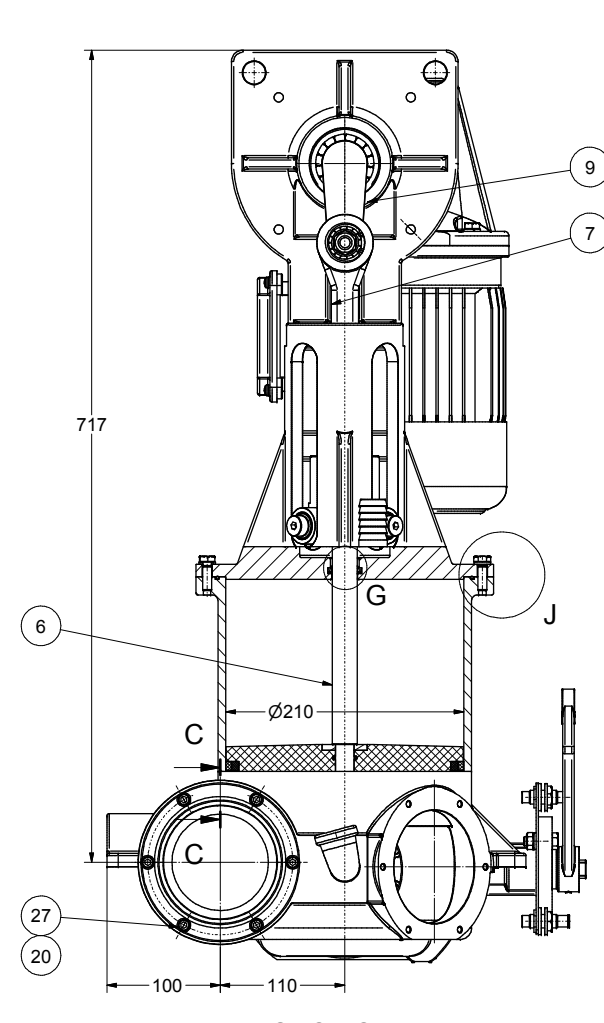
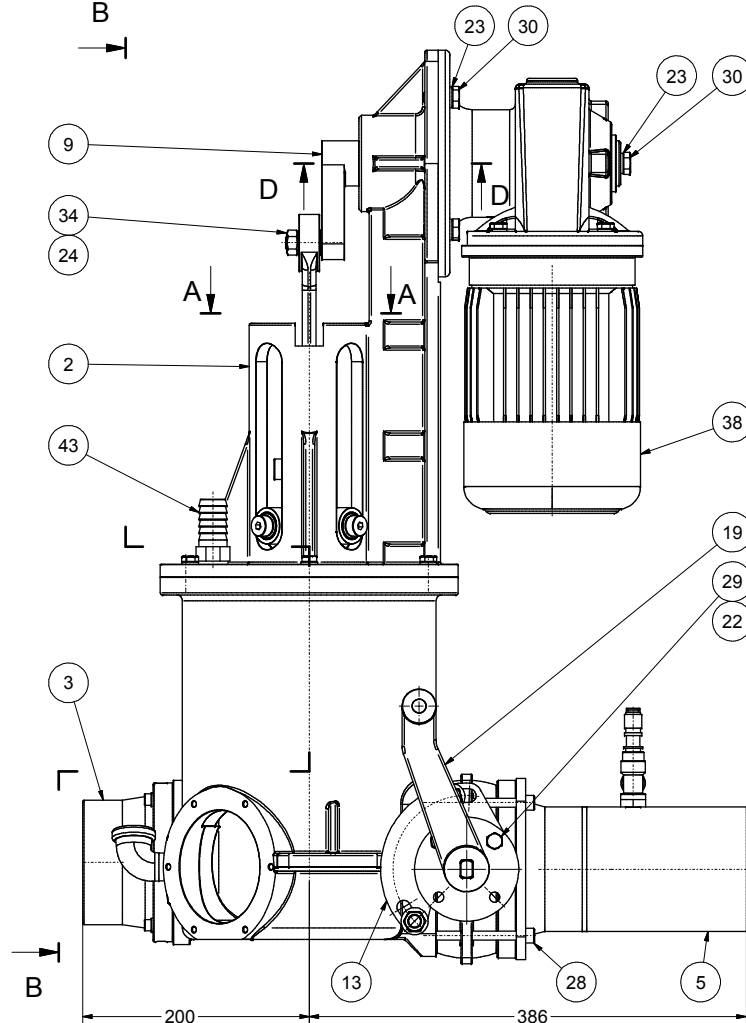
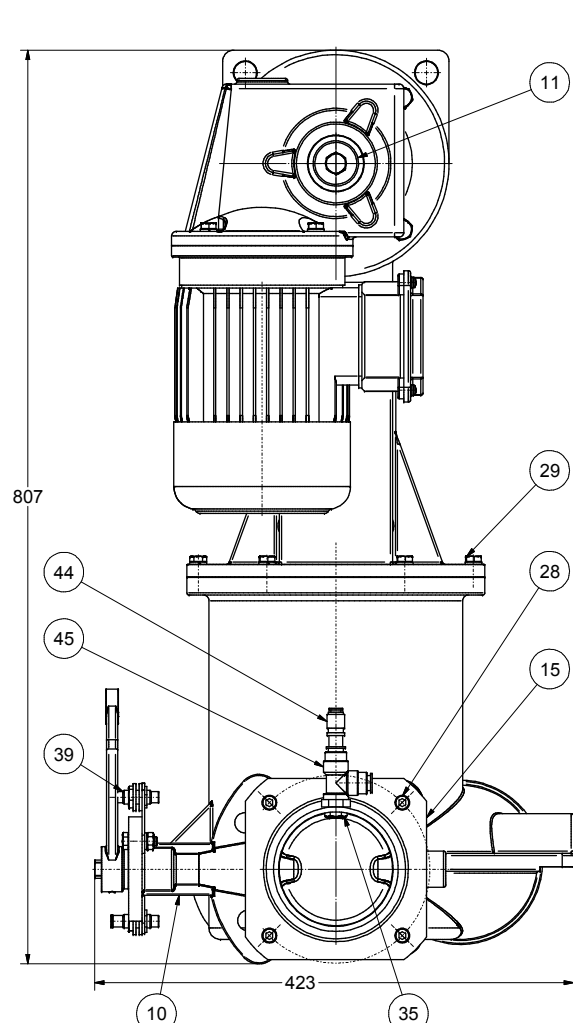


12 11 10 9 8 7 6 5 4 3 2 1



12 11 10 9 8 7 6 5 4 3 2 1

* O-RING $\phi 113.9 \times \phi 3.53$ B.S. REF 246 (ALMOG) OR ACCORDING TO DRAWING No. 4-MCM2-34.

Parts List						
ITEM	TITLE	QT	STANDARD	DIMENSION	PART NUM	CAT No
1	BODY	1			3-MCM2-14	
2	TOWER (Machining)	1			2-MCM2-3	M1PZ0200
3	VALVE HOUSING	1			3-MCM2-2	M1PX0001
4	FORK	1			3-MCM2-3	M1PX0002
5	TUBE ASS.	1			3-MCM2-4	M1PU0300
6	PISTON ASS.	1			3-MCM2-5	M1PZ0400
7	CONNECTING ROD ASS.	1			3-MCM2-6	M1PZ0500
8	VALVE RING ASS.	1			3-MCM2-8	M1PZ0600
9	CRANK (Machining)	1			3-MCM2-11	
10	BUTTERFLY VALVE	1			4-MCM2-7	M1PZ0003
11	WASHER	1			4-MCM2-12	M1PA0004
12	SLEEVE	4			4-MCM2-17	M1PI0006
13	PLATE FOR SENSORS	1			4-MCM2-19	M1PF0700
14	SLEEVE	1			4-MCM2-23	M1PI0007
15	LOCKING PLATE	1			4-MCM2-24	M1PA0008
16	WHEEL	4			4-MCM2-25	M1PG0009
17	SLEEVE	4			4-MCM2-26	M1PS0010
18	SLEEVE	1			4-MCM2-27	M1PS0011
19	LEVER ASS.	1			4-MCM2-32	M1PZ0900
20	WASHER	6	DIN125A A4	$\phi 6$		
21	WASHER	1	DIN 125 A	$\phi 12$		
22	SPRING WASHER	8	DIN 127 B	$\phi 8$		
23	SPRING WASHER	5	DIN 127 B	$\phi 10$		
24	SPRING WASHER	1	DIN 127 B	$\phi 12$	DIN 127 - A 12	
25	SCREW	2	DIN7982 A2	ST3.9x19		
26	SCREW	1	DIN 916	M5 x 6		
27	SCREW	6	DIN 912 A4	M6 x 25		
28	SCREW	4	DIN 912 A4	M8x90		
29	BOLT	8	DIN 933 A4	M8 x 25		
30	BOLT	5	DIN 933	M10x25		
31	SHOULDER SCREW	4	ISO 7379	$\phi 12$ /M10x25 12.9		
32	SHOULDER SCREW	1	ISO 7379	$\phi 12$ /M10x30 12.9		
33	NUT	2	DIN 934	M8		
34	NUT	1	DIN 934	M12x1.5		
35	NUT	1	ILAN AT GAVISH	1/4"		
36	LOCK WASHER	4	BN 14083	$\phi 12$		
37	KEY	1	DIN 6885	8x7x50		
38	GEAR MOTOR	1	NORD			SK 1S 63 AF- 80 S/L
39	PROXIMITY SWITCH INDUCTIVE	2	AUTONICS			PR12-4-DP
40	O-RING	1	ALMOG	$\phi 221.93 \times \phi 2.62$		B.S.REF174
41	SEAL	1				*
42	SEAL	1	SEAL JET	$\phi 30 \times \phi 22 \times 5$	PU	A11
43	UNION NIPPLE	1	PLASSON	3/4" x $\phi 25$		5361285
44	REDUCTION	1	BACCARA	$\phi 12 \times \phi 8$		21660658
45	TEE	1	BACCARA	1/4" x $\phi 12$ (SIDE)		21661458
46	BEARING	8	SKF			61901
47	BEARING	2	SKF			6206-2Z

PUMP ASS.		Material	Weight	<p>ENVIRONMENTAL TECHNOLOGIES Molelet, M.P. Gilboa 19130, Israel Tel. 972-4-6531104, Fax. 972-4-6532505</p>
		721x586x423	82.5Kg	
		Date	Name	
		1/4/2004	ELENA	
		Checked	11/17/2004	VJURI
		Standard		
		General Tolerance	$\pm IT 14/2$	
		Batch No.	1-MCM2-1	
		State	Changes	
		Date	Name	
		3		
		2		
		1		
		10		