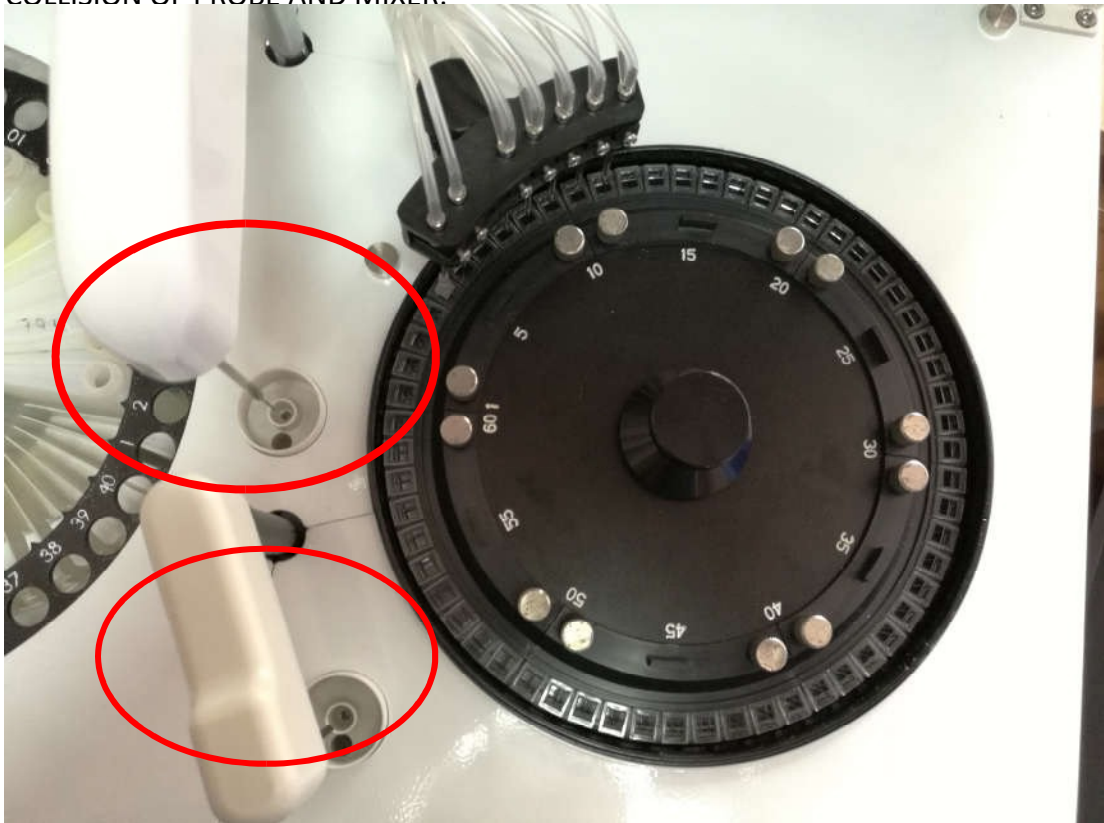


PKL PPC 125 CHEMISTRY ANALYZER OPERATING PROCEDURE

STARTUP:

1. BEFORE STARTING, PLEASE CHECK THE WATER SUPPLY AND WASTE IF FULL.
2. CHECK ALSO IF THE PROBE AND MIXER ARM AT THE HOME POSITION TO AVOID COLLISION OF PROBE AND MIXER.

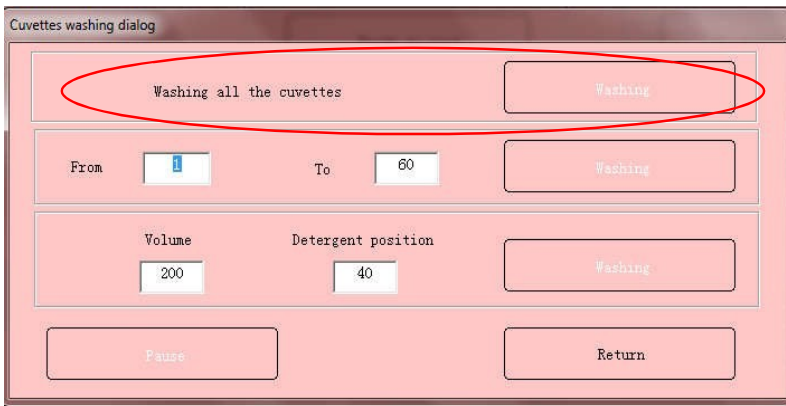


3. TURN ON ANALYZER AND COMPUTER
4. CLICK ON ANALYZER 200.EXE SHORTCUT

5. INPUT USERNAME: PKL PASSWORD: 1234



6. GO TO MAINTENANCE > CUVETTE WASHING > WASH ALL CUVETTES. AFTER WASHING, PLEASE WAIT FOR 30 MINUTES TO STABILIZE THE LAMP.



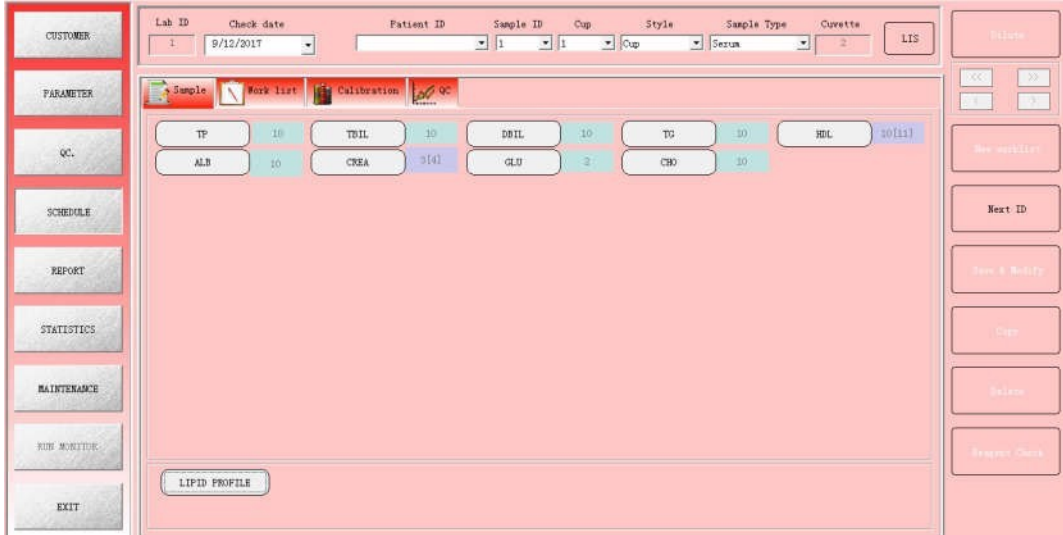
7. AFTER LAMP STABILITY. GO TO MAINTENANCE > READY TO TEST



8. CHECK CUVETTE VALUES SHOULD BE ABOVE 25000.

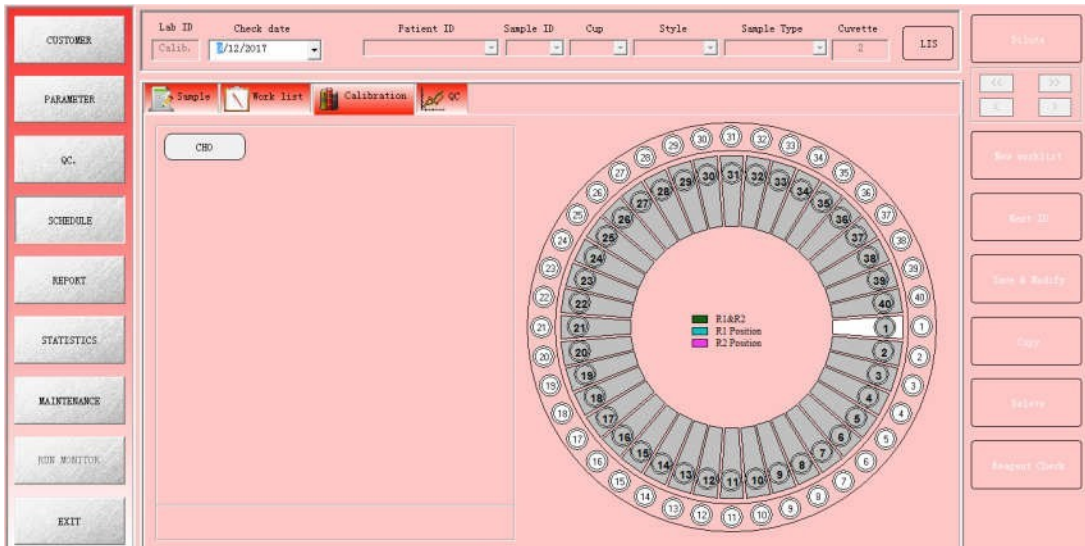
ROUTINE:

1. ON MAIN SCREEN GO TO SCHEDULE SELECT THE FOLLOWING TABS



CALIBRATION FOR STANDARD REGISTRATION

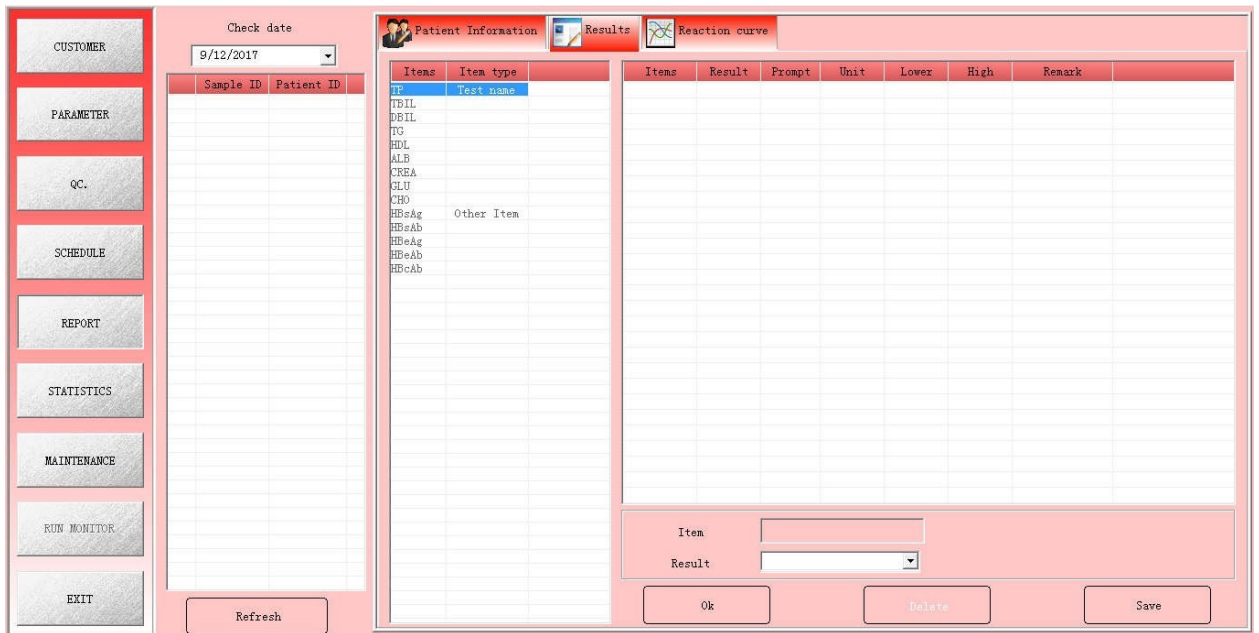
SELECT THE TEST YOU ARE GOING TO CALIBRATE AND PRESS SAVE AND MODIFY.



4. IF REAGENTS ARE ENOUGH, PROCEED TO START TAB AND YOU WILL SEE THE CAROUSEL POSITION OF SAMPLES AND REAGENTS TO VERIFY AND CLICK AGAIN ON THE START TAB.
5. TO ADD SAMPLES WHILE RUNNING, GO TO STAT AND SELECT SAMPLE AND REGISTER AS EMERGENCY SAMPLE OR ADD SAMPLE.
6. WHEN TESTS ARE FINISHED, EXIT THE MONITOR WINDOW BY CLICK ON THE RETURN TAB.

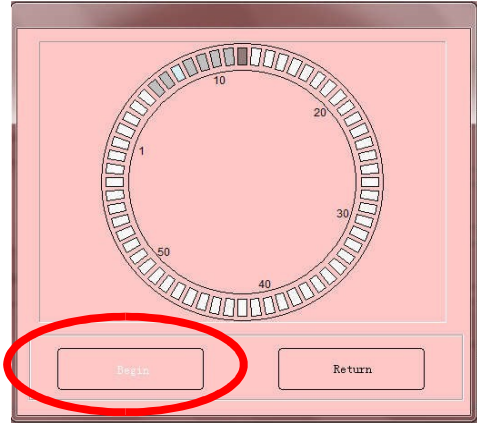
RESULTS REVIEW

1. GO TO REPORT> RESULTS TAB TO VIEW RESULTS. USE REFRESH BUTTON TO REFRESH THE LATEST RESULTS.

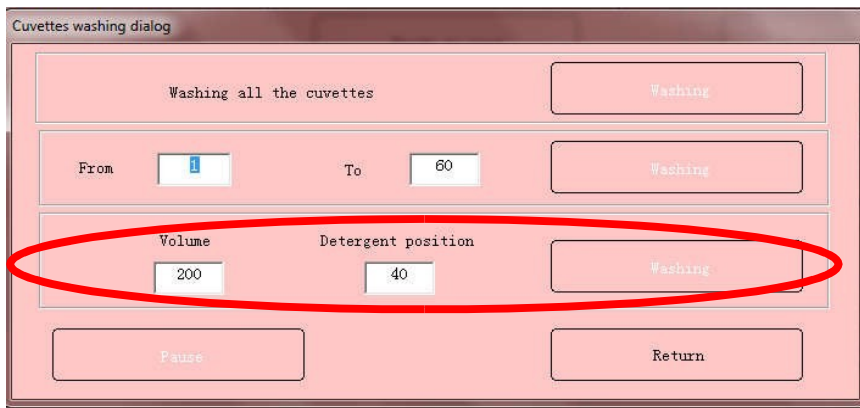


MAINTENANCE:

1. EVERY AFTER USING THE ANALYZER GO TO MAINTENANCE>WATER TO WASH THE CUVETTES AND SOAK WITH WATER TO AVOID STAINING IN THE CUVETTES.



2. ONCE EVERY WEEK PERFORM CUVETTE WASHING USING THE ALKALINE DETERGENT, PLACE IN NUMBER 40 POSITION AND 200 uL each cuvette



3. CLEAN THE SURFACE OF THE ANALYZER EVERY END OF USE.