



# Installations manual for **Ambu® MegaCode Simulation System**



Ambu A/S

These directions for use may be updated without further notice.  
Copies of the current version are available from the manufacturer.

© Copyright 1998 Ambu A/S, Denmark. All rights reserved.

This Ambu® MegaCode Trainer System is protected by © Copyright.

No part of this programme or the programme documentation may be reproduced in any form, including photocopying, without the prior written permission of the copyright owner.

### **Install the Ambu Megacode Simulation Software**

The Ambu Megacode Simulation Software is delivered on a CD-ROM and installs like most other Windows applications.

To install the Ambu Megacode Simulation Software from the CD-ROM, do the following:

1. If Windows isn't running, please start it now.
2. Insert the Ambu Megacode Simulation Software CD into your CD-ROM drive.

Windows should detect the CD and automatically run the installation software. If the automatic detection feature is turned off, please start the installation software by clicking Start, select Run..., and type D:\setup.exe (where D is the drive letter of your CDROM drive).

Then click OK or press ENTER.

3. Follow the instructions on the screen.

During the installation you have the possibility of choosing the language version you would like to install. It is possible to mark and hereby to install more than one language.

# Installations manual For USB driver

Index	page
<b>General description</b>	16
<b>Description of drivers</b>	16
<b>Installation of driver</b>	17
<b>Win 98</b>	17
<b>Win 2000</b>	20
<b>ME</b>	26
<b>XP</b>	29
<b>Removing driver</b>	34
<b>For 98</b>	35
<b>For 2000</b>	36
<b>For ME</b>	38
<b>For XP</b>	39

## **General description**

Description of drivers that can be found at the CD-ROM.  
Instructions for installation and updating of USB driver.

## **Description of drivers**

Ambu USBdriver contain a driver that is necessary for Ambu Drug Box and USB Interface in order to connect to the PC.

## Installation of driver

### Win 98

Connect the Drug Box/USB Interface to the PC using a standard USB A-B cable. Windows will pop up the following windows:



Click "Next".



Click "Next".



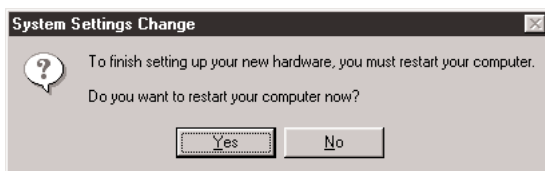
Select "Specify the location:" and browse the location click "Next".



Click "Next".



Click "Finish".

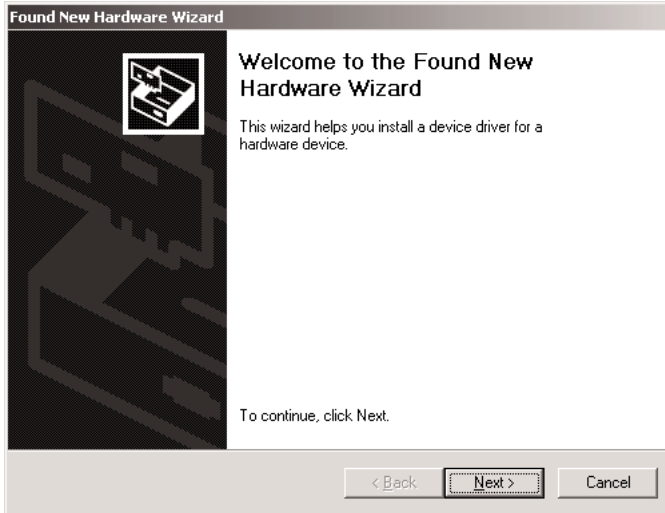


Click "Yes" to finish the installation.

Disconnect the USB cable and wait a few second, and connect the USB cable again. The Driver is now correct installed.

## Win 2000

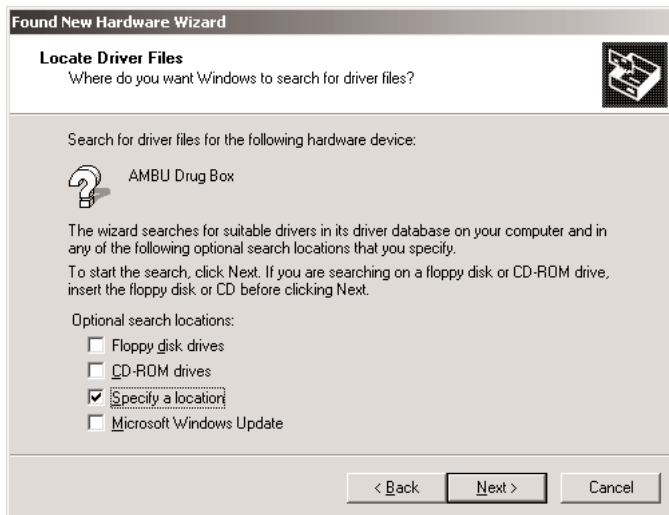
Connect the Drug Box/USB Interface to the PC using a standard USB A-B cable. Windows will pop up the following windows:



Click "Next".



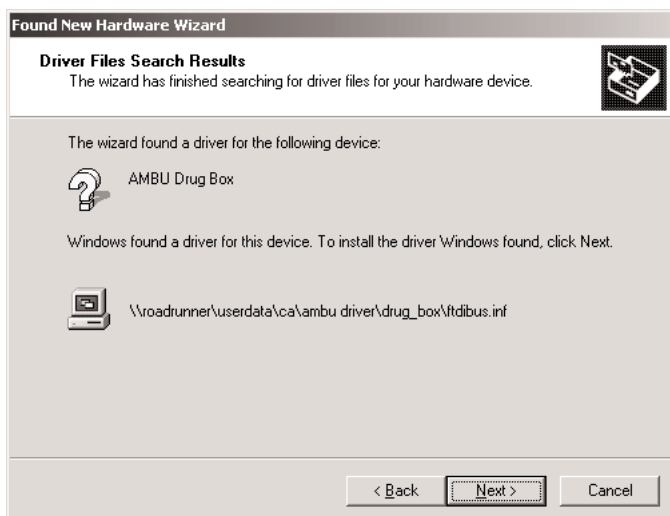
Click "Next".



Select "Specify a location" and click "Next".



Browse the location and click "OK".



Click "Next".



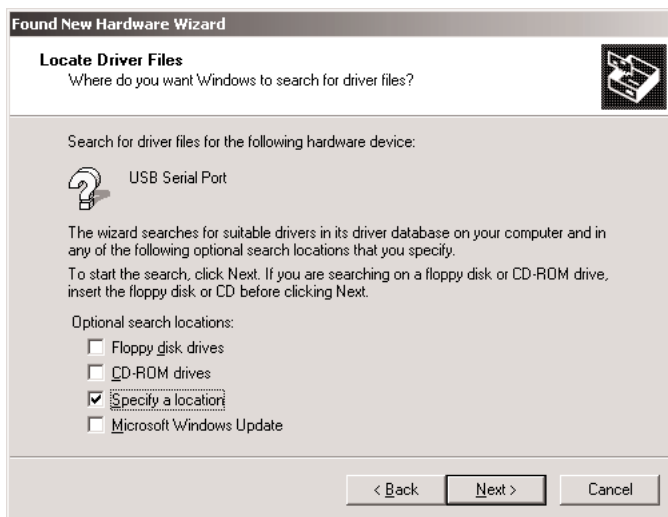
Click "Finish".



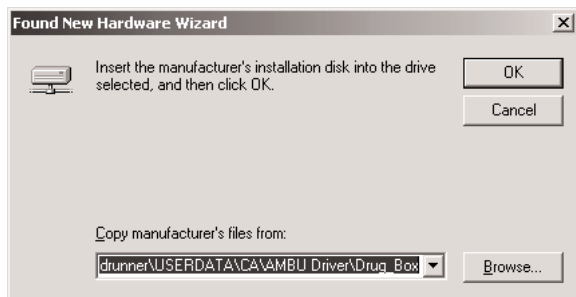
Click "Next".



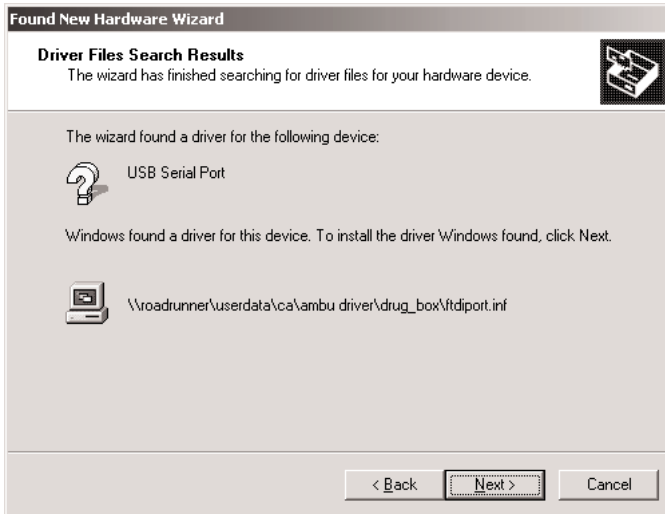
Click "Next".



Select "Specify a location" and click "Next".



Browse the location and Click "OK".



Click "Next".

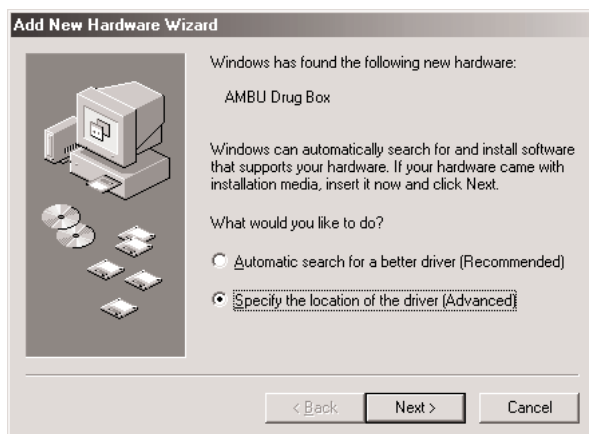


Click "Finish".

Disconnect the USB cable and wait a few second, and connect the USB cable again. The Driver is now correct installed.

## Me

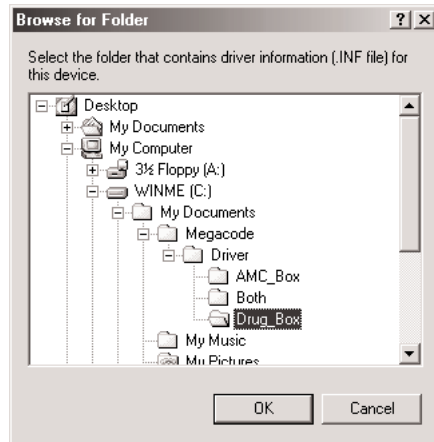
Connect the Drug Box/USB Interface to the PC using a standard USB A-B cable. Windows will pop up the following windows:



Click "Next"



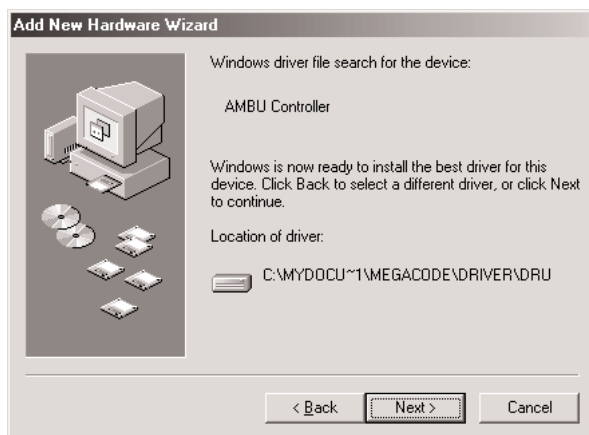
Click "Browse"



Locate the folder with the driver and click "Ok"



Click "Next"



Click "Next"

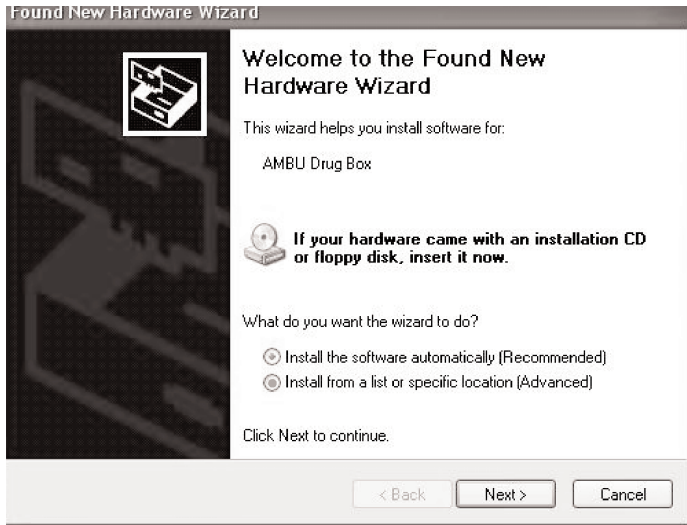


Click "Finish"

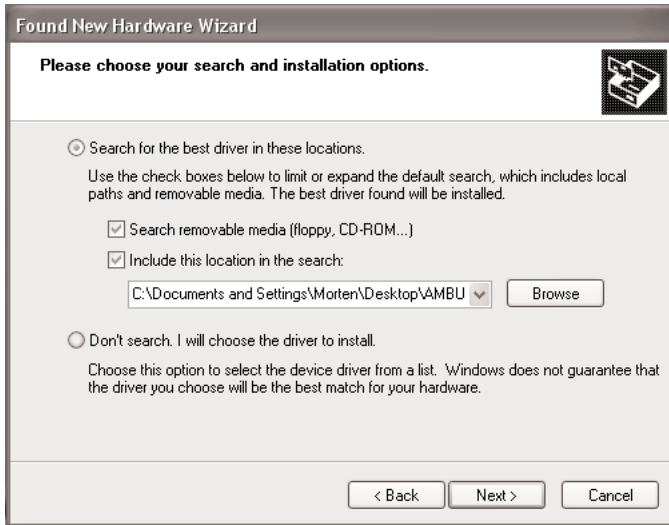
Disconnect the USB cable and wait a few second, and connect the USB cable again. The Driver is now correct installed.

## Xp

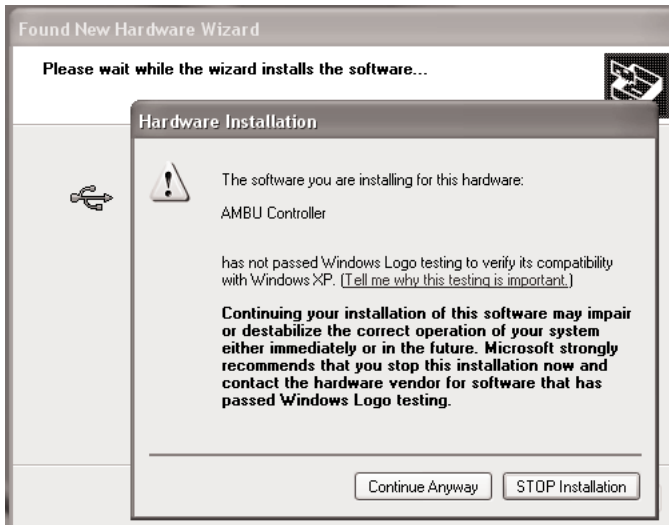
Connect the Drug Box/USB Interface to the PC using a standard USB A-B cable. Windows will pop up the following windows:



Select "Install from a list or specific location (advanced)" and click "Next >".



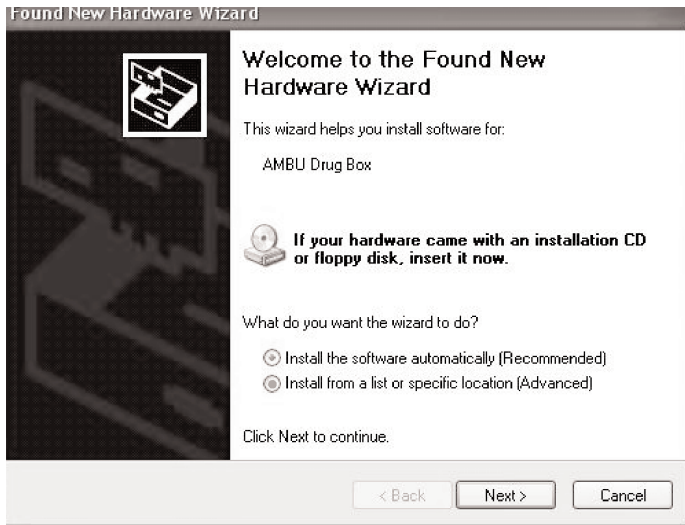
Select "Include this location in the search:" and Browse for the location of the Driver and click "Next >".



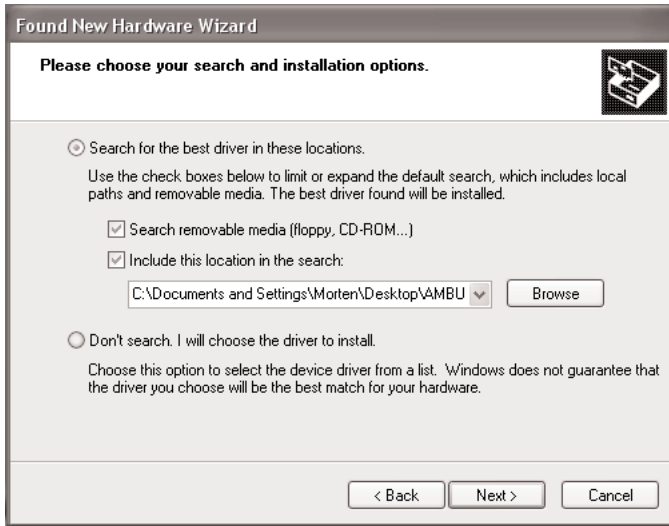
Click "Continue Anyway".



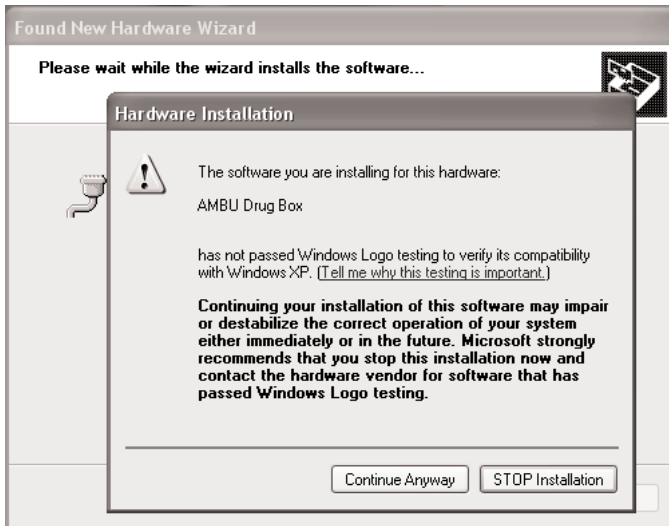
Click "Finish".



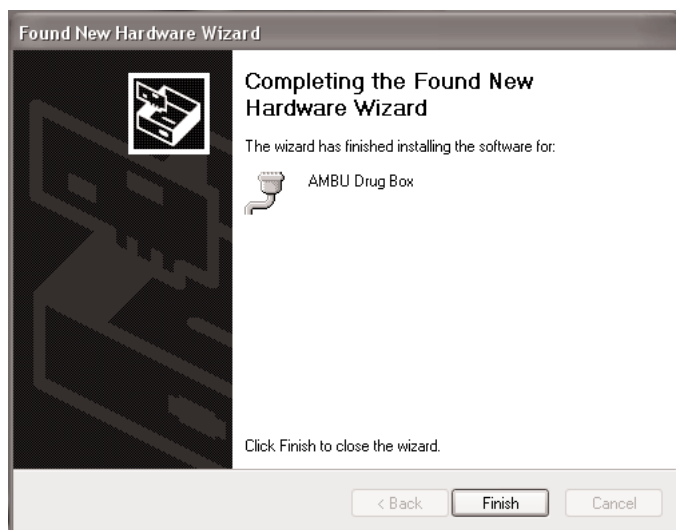
Select "Install from a list or specific location (Advanced)" and click "Next >".



Click "Next >".



Click "Continue Anyway".



Click "Finish".

Disconnect the USB cable and wait a few second, and connect the USB cable again. The Driver is now correct installed.

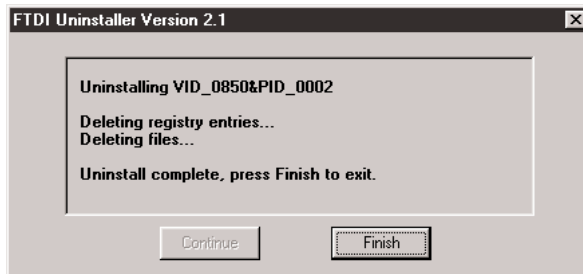
## Removing driver

It is necessary to remove the old Driver before updating the driver. Disconnect the USB cable from the Box. Run the file driveruninstall.exe to be sure that the old driver is uninstalled. The driveruninstall.exe is found on the CD-ROM

This window will pop up.



Click "Continue".

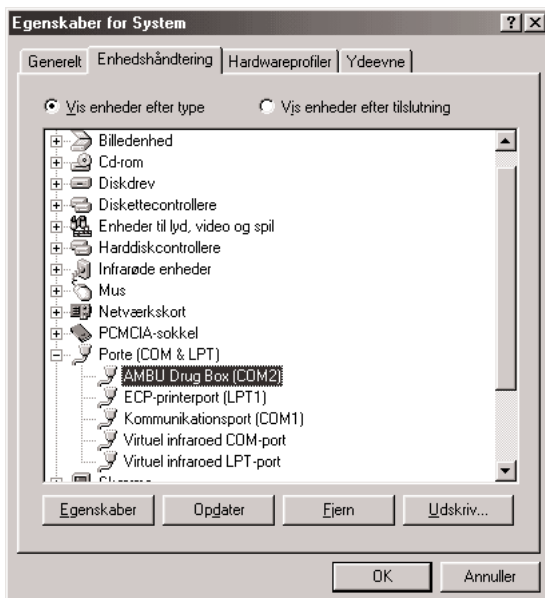


Click "Finish".

Follow the section which match your system.

## For 98

Click with right mouse bottom on My Computer, and select properties. Then select systemmanager and select Ports.

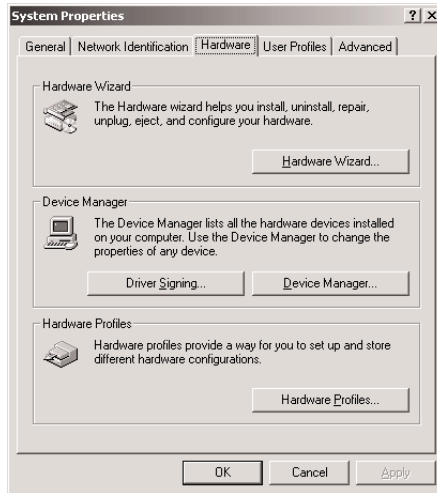


If there still is an AMBU device, click with the right mouse bottom on the device and select uninstall and OK. If there isn't an AMBU device the driver is uninstalled properly.

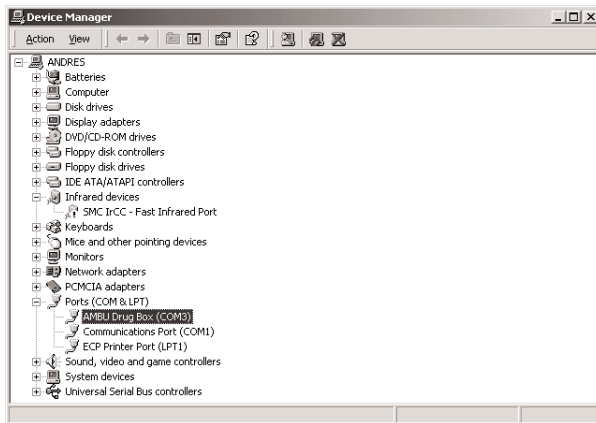
Then connect the USB cable to the Box again and follow the instruction under Installation of driver.

## For 2000

Click with right mouse bottom on My Computer, and select properties.



Then select Hardware and Device Manager...



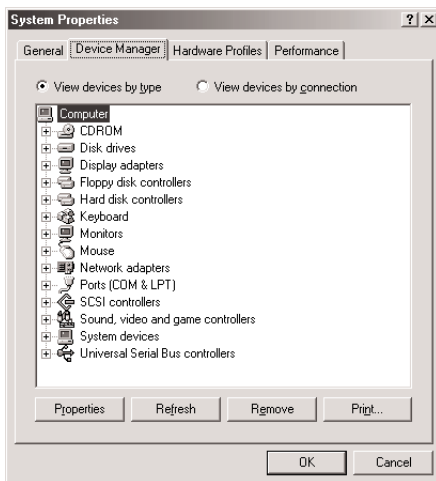
Select Ports.

If there still is an AMBU device, click with the right mouse bottom on the device and select uninstall and OK. If there isn't an AMBU device the driver is uninstalled properly.

Then connect the USB cable to the Box again and follow the instruction under Installation of driver.

## For Me

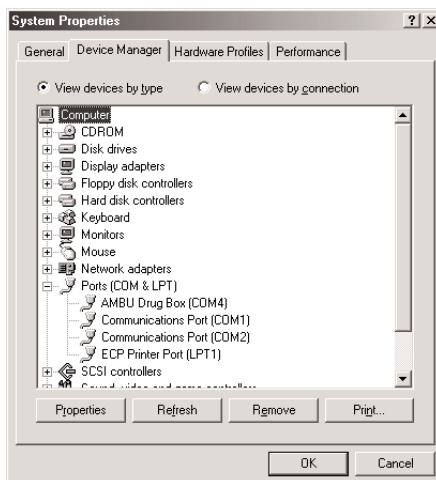
Click with right mouse bottom on My Computer, and select Device Manager.



Select Ports.

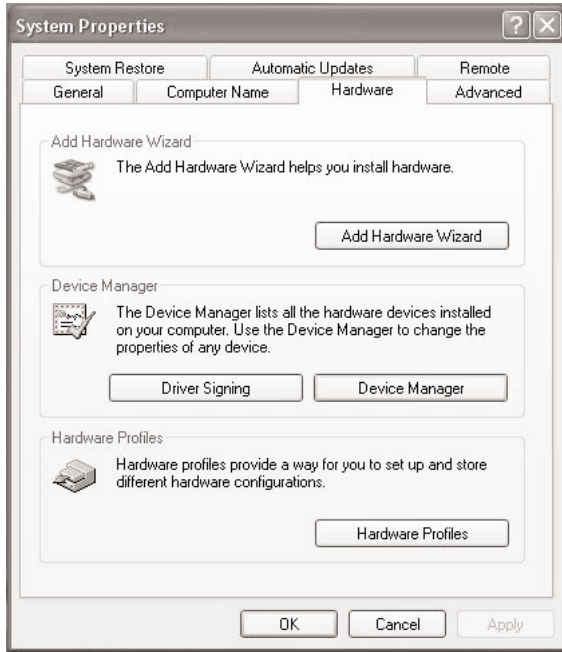
If there still is an AMBU device, click with the right mouse bottom on the device and select uninstall and OK. If there isn't an AMBU device the driver is uninstalled properly.

Then connect the USB cable to the Box again and follow the instruction under Installation of driver.

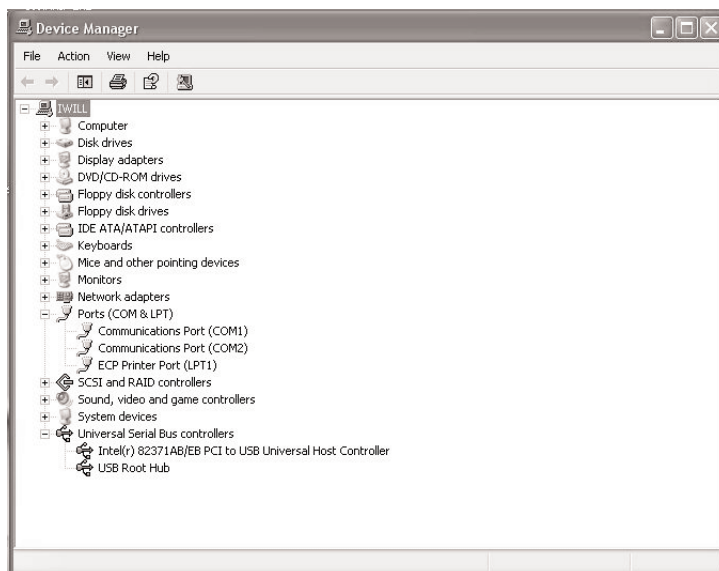


## For Xp

Click with right mouse bottom on My Computer, and select properties.



Then select Hardware and Device Manager...



Select Ports.

If there still is an AMBU device, click with the right mouse bottom on the device and select uninstall and OK. If there isn't an AMBU device the driver is uninstalled properly.

Then connect the USB cable to the Box again and follow the instruction under Installation of driver.

**Manufacturer:**

Ambu A/S  
Baltorpbakken 13  
P.O. Box 232  
DK-2750 Ballerup  
Denmark  
Tel.: +45 72 25 20 00  
Fax: +45 72 25 20 50  
E-mail: [ambu@ambu.com](mailto:ambu@ambu.com)  
Internet: [www.ambu.com](http://www.ambu.com)

**Subsidiary:**

Ambu Inc.  
611 N. Hammonds Ferry Road  
Linthicum, MD 21090-1356  
Tel.: +1 410 636 1144  
Fax: +1 410 636 9969  
[www.ambu.com](http://www.ambu.com)

Ambu Ltd.  
Burrel Road  
St. Ives  
Cambridgeshire PE27 3LE  
Tel.: +44 1 480 498 403  
Fax: +44 1 480 498 405  
[www.ambu.com](http://www.ambu.com)