

## 2.6 MASTER VALVE LOCATION

### 2.6.1 Valve Unit A

MV No.	Function	MV No.	Function
1-1	Waste drain, switch pressure/vacuum	6-1	RBC diluent DP fill/dispense switch
1-2	Waste drain, drive Pinch Valve	6-2	RBC diluent DP drive
2-1	Diluent fill, switch pressure/vacuum	7-1	RBC diluent line switch
2-2	Diluent fill, connect diluent line	7-2	WBC/Hgb diluent line switch
3-1	Diluent chamber pressure relief	8-1	WBC/Hgb diluent DP/lyse DP drive
3-2	Rinse cup drain, drive Pinch Valve	8-2	WBC/Hgb diluent DP switch
4	STR-WH (lyse) dispense control	8-3	WBC/Hgb lyse DP switch
5	Fill Detector Block Master Valve Assy		

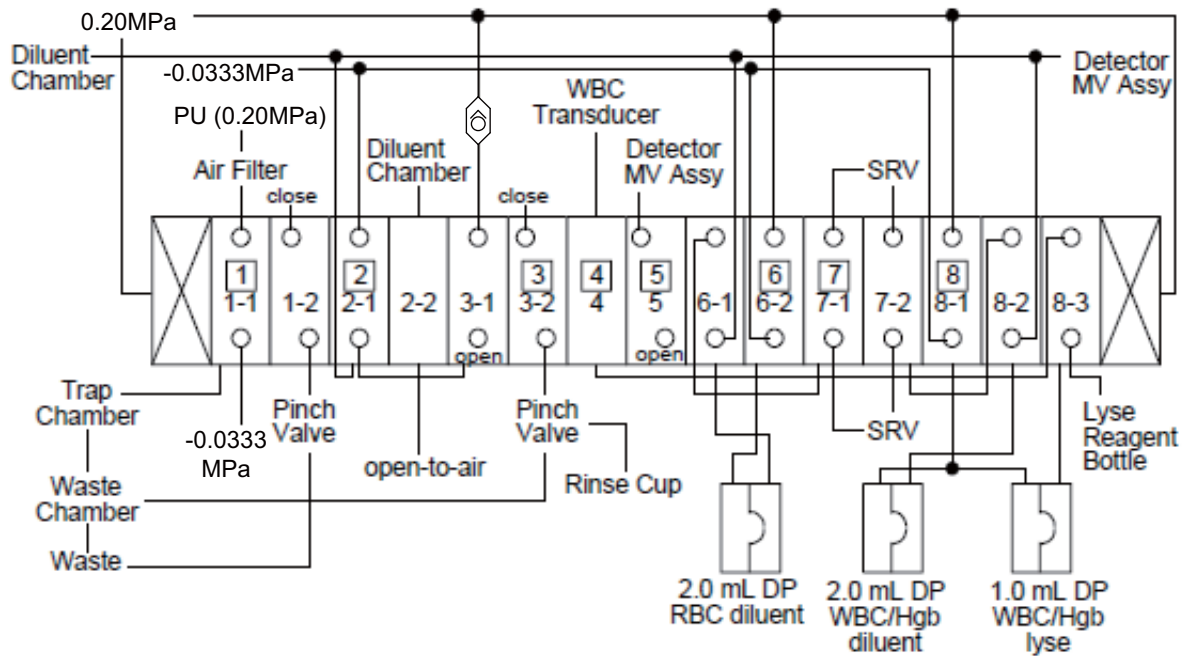


Figure 2-6-1: Valve Unit A-1 Tubing

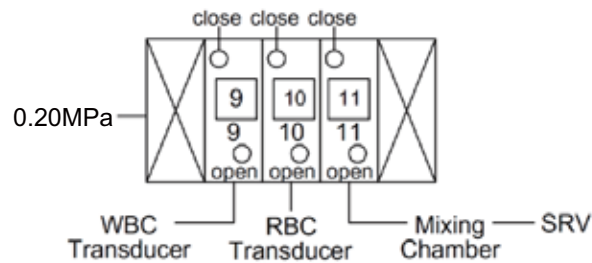


Figure 2-6-2: Valve Unit A-2 Tubing